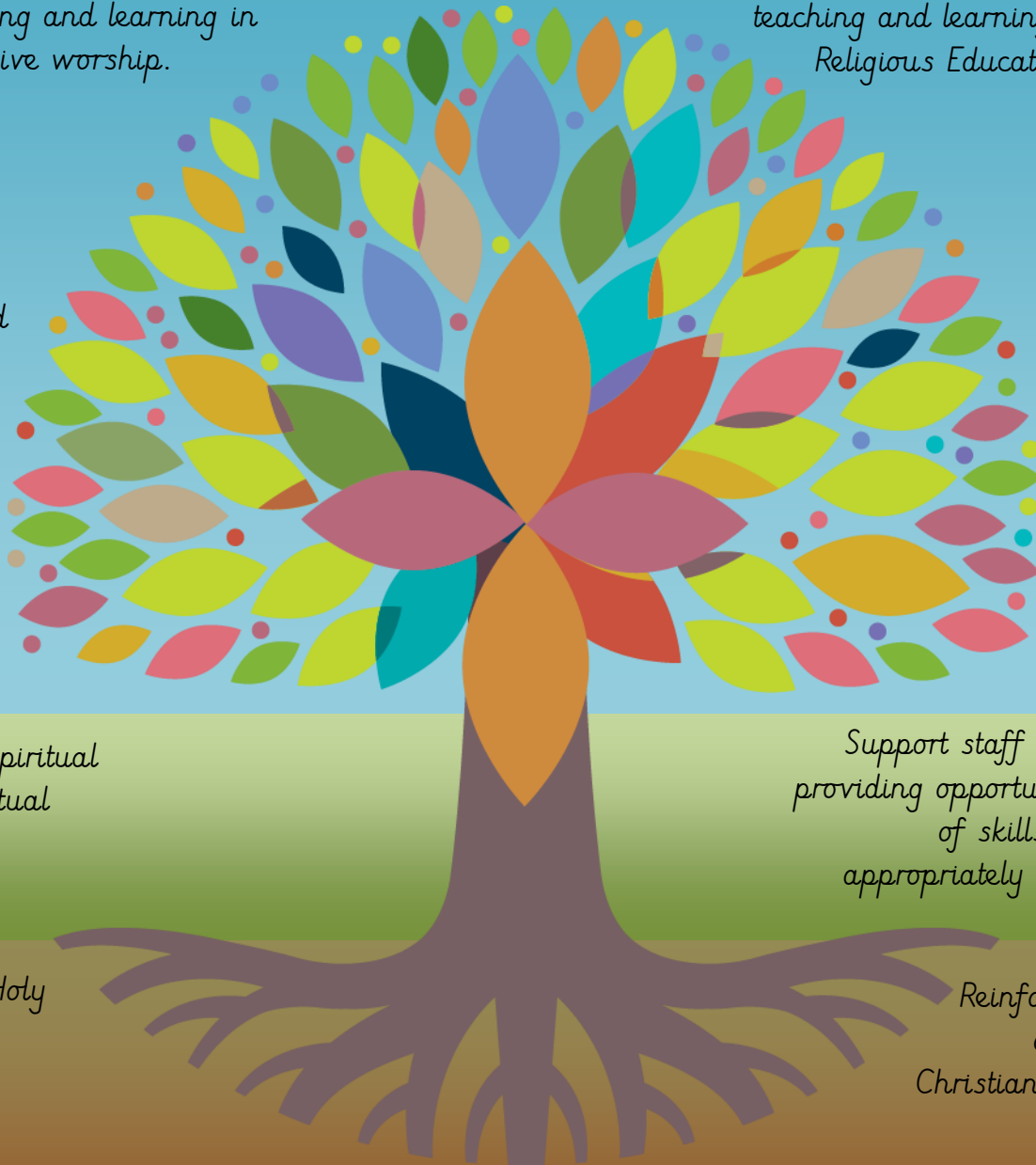




A 'deep dive' will take place to monitor and enable continual development of the quality of teaching and learning in collective worship.

A 'deep dive' will take place to monitor and enable continual development of the quality of teaching and learning in Religious Education.



Maintain and develop reflection areas in classrooms and around school, to enable pupils the opportunity for deeper spiritual reflection.

Encourage pupil voice and child-led worship through development of the Spiritual Ambassadors team.

Embed and monitor the use of spiritual journals to track children's spiritual development.

Continue to nurture links with Holy Trinity Church.

Maintain links with Lichfield Diocese and create links with other Church of England schools in the local area.

Embed the use of knowledge organisers during units of work to support children's understanding and recall of key concepts.

Support the whole school community in articulating our school vision and the theology that underpins this.

Support staff to follow the Curriculum plan for RE, providing opportunities for children to develop a range of skills (e.g. enquiry and comparison) and appropriately adapting learning for SEND and GDS pupils.

Reinforce children's personal and spiritual development through making links to Christian and British values as well as other religions.

Work towards developments outlined within previous SIAMS report and termly targets set by CDA.